

EAST KENT FEDERATION

EAST KENT NEWS

JANUARY 2025



Contact Information for the Federation Office

Crown House,
John Roberts Business
Park,
Pea Hill,
Whitstable CT5 3BJ

Tel: 01227 464106

Email:
federation.secretary@eastkentfedwi.org.uk

Opening Hours:

Tuesday to Thursday,

9.30am – 3.00pm

(closed for lunch from
1.00pm to 1.30pm)

East Kent Federation
Website

[Ticketsource](#) for bookings



Word from the Chair



A Happy New Year to all our members, I hope you all enjoyed the Christmas festivities although they are beginning to feel rather a distant memory!

Let us look forward to 2025, making it a year full of exciting possibilities for our WIs to embrace with enthusiasm, friendship and ways to support one another and their communities. Why not take the opportunity to access the WI Learning Hub, there are many and varied courses available, they are all free for members and it is always possible to invite a friend who may not have access to the internet, to join you and share the experience. Non-members may also access courses at a cost of £6.

Please remember to read the 4 resolutions and tell your secretary which one you would like to support to go forward to the NFWI AGM in June, the full list can be found in the November/December 2024 issue of WI Life and on [MyWI](#). The PA team is making arrangements for our meeting in April when we will learn more about the resolution that has been chosen.

Our Federation teams are busy organising events for members and unless otherwise stated these will also be open to non-members, so why not bring a friend? All tickets will be sold on a non-returnable, non-refundable basis unless the event is oversubscribed.

It is still possible to buy tickets for our AGM at the 'early bird' price so hurry to get your order in before the deadline of 31st January 2025 when full price applies.

Carol

federation.chairman@eastkentfedwi.org.uk

From the Board of Trustees

We are aware that rising costs such as venue hire and speakers are becoming challenging for WIs and, in many cases, fund raising more difficult.

We know that many of you have innovative, fun and interesting ideas for meetings that cost very little, and we hope that you would be prepared to share them to support fellow members. If you are happy to do this please will you send them to the federation office – or pop them on the Facebook page.

See page 5 or the first idea.

Treasurer's Chat

Happy New Year to you all. I do hope this year brings you good health and happiness in your WI family.



Dual members

Dual members pay the WI portion of the subscription fee and according to the information on MyWI there is no pro-rata rate for dual members. Following advice from NFWI the East Kent Federation Trustees have agreed that from April 1 2025 new dual members in EKFWI will pay the WI portion of the subscription at the same pro-rata rate as new full members.

Please note that if the WI has reduced the WI portion this must be applied to all members both renewing and new members and the pro-rata rate applies only for new members.

This new advice starts from the beginning of new subscription year, 1 April 2025, not before.

Volunteering

Those of you who are regular listeners to the Today Programme on BBC radio 4 will know that over the Christmas period guest editors are invited to edit the programme. On Boxing Day Dwayne Fields, the new Chief Scout, took on this role with the theme of 'Volunteering'. Volunteering is good for us, as it also brings positive results in the work place. He suggested that everyone should be allowed to take 35 hours a year as paid leave to fulfil a voluntary role. Of course this only really works for larger businesses where an employee can be missed from the office for an hour. I do know that some of the larger city companies already allow staff volunteer time. If you work perhaps talk to HR about this particularly if you are considering becoming a Federation trustee. Click on this link to hear [Today Programme 26/12/24](#)

Elizabeth

federation.treasurer@eastkentfedwi.org.uk

DATES FOR YOUR DIARY

Monday 31 March 2025	Federation Holiday
Monday 14 April 2025	EKFWI AGM, Great Hall, Kent College, Canterbury
Tuesday 29 April 2025	Circular walk from Chilham
Wednesday 28 May 2025	Summer Garden Day
Saturday 7 June 2025	Archery Taster Day, The Archbishop's School, Canterbury

To book direct or to see if tickets are still available click on [Ticketsource](#) for most events.

To ensure emails from the Federation appear in your inbox add EKFWI to your contacts /address book federation.secretary@eastkentfedwi.org.uk

LAST CHANCE FOR EARLY BIRD PRICE TICKETS

EKFWI – CIO ANNUAL GENERAL MEETING 2025

Monday 14th April 2025

Great Hall, Kent College, Whitstable Road, Canterbury, CT2 9DT.

Every WI should send a delegate to the meeting and, as this venue is slightly smaller, we have allocated each WI 4 observer tickets.

If WIs do not take their full allocation of observer tickets the extra will be made available to other WIs.

Members should apply via their WI to be included on the waiting list.

Early Bird observer tickets purchased prior to 31st January 2025 - £18

Tickets purchased after 31st January 2025 – £20

Our afternoon keynote speaker is Dr Annie Gray – one of Britain's leading food historians. She is an author, broadcaster and consultant, specialising in the history of food and dining from c1600 to the present day.



In the morning, our speaker will be Dr Graham Jones – military music historian.

Free onsite parking, bus stop outside school - busses from Canterbury Bus station (via St Dunstan's- Canterbury West Station), and Whitstable.

Bring your own packed lunch to eat in the venue or, if the weather is nice, outside on the grass. Tea and coffee will be available to purchase before the meeting and at lunch

Federation Charity of the year MS Therapy Centre

At the 2024 AGM Yolanda Barker from Singleton WI gave us an inspirational talk on living with MS (multiple sclerosis). The Board unanimously decided that it would be good to support the MS Therapy Centre in Canterbury, a Charity that offers facilities to support people affected by MS as well as their families and those who care for them. We asked you to raise as much money as you could for the Charity and the monies raised would be collected at the 2025 ACM.

However, after some thought the Board decided that, as from now the nominated Charity will run for **2 years**. So, you now have some extra time to raise money for this very worthwhile Charity. The monies raised will now be collected at the **2026 ACM**. You have time to raise money from coffee mornings, tombolas, cheese and wine evening, raffle or any other ideas your WI might have to help support this Charity.

Thank you for your support.

FEDERATION HOLIDAY 2025 31st March – 4th April 2025

There are a **couple of places** available on this trip so if you find that you are now able to go or would like to go, please contact the office for details and an application form

It would be great if a few more members could join us for a fun crafty break. This holiday is open to members and non members so why not come with your sister, cousin or neighbour - women only though!

More information in the [July Issue of the EKN](#)

Visit from the NFWI Chief Executive



In September last year we all received an outline of the NFWI five-year Strategy and in that document I noticed that NFWI staff and Trustees were keen to come and meet with WIs and Federations to discuss and receive feed-back on the plan. As members of

our WI were interested to know more, I contacted NFWI and to make this visit as useful as possible I extended the invite to WI's in Whitstable, Herne Bay, Faversham and Margate as well as to our Federation Trustees and in November we were delighted to receive a visit from Chief Executive Melissa Green.

Melissa lives in East Sussex and struggled through flooded roads to join us at Chestfield WI hall where she spoke for 90 minutes with a real passion for our Organisation, clarifying the purpose of the Strategy and giving an insight into the workings of NFWI.

Melissa explained that the first Strategy published in 2020 was seen by some members as a bit 'corporate' and perhaps remote from our day-to-day experience of the WI but as a result of the Strategy and feed-back provided by members a major overhaul of the guidance, rules and constitution has taken place, including the production of the WI Handbook and the launch of training for Federation Trustees and WI Advisers.

The consultation for the next strategic plan will end on 1st March 2025 when the information received from us, through the 'Count Me In' survey and from communications from members and Federations on what we want for our future, will inform the final plan. The staff at NFWI is made up of around 46 people who will then collate and focus the results on four main issues.

Activism: Where our approach to national campaigning will be reviewed and developed to nurture and support local activism so the WI continues to be a force for positive change in the 21st Century.

Belonging: NFWI will ensure that members are active and visible in bringing communities together by targeting specific groups of women to include them in the WI family.

Learning: The WI Learning Hub will continue to provide all women with a place where they can focus on their own personal development and growth, sharing skills, expanding knowledge and forging new friendships.

Informed: With around 5,700 charities (Institutes) to support in the UK NFWI will focus on improved data collection and management including an update of the MCS system.

In the past year the WI has welcomed just over 24,000 new members but Melissa recognised that WI's continue to close, often because they can no longer recruit officers. She highlighted that women live very different lives today and misconceptions

about who we are has resulted in three 'lost generations' primarily those born since 1980. This decline in membership means that NFWI have to work hard to reach new audiences. The WI must now appeal to women living in a fast-changing world in urban and city areas as well as in the more traditional rural areas. NFWI know that our campaigning is what interests new members and makes them think again about what we do and what membership can offer them and this knowledge has resulted in the introduction of alternative memberships such as the Supporter Programme and Virtual WI's and of course a wealth of information on MYWI (soon to be simplified!).

Melissa gave a wonderful and inspiring presentation of our organisation and an excellent view behind the scenes into what NFWI are doing now and plan to do in the future for the benefit all women, of all ages, in all walks of life.

If you would like to know more or to share your views, email your feedback: Vision@nfw.org.uk call 020 7371 9300 or write to: NFWI,104 New Kings Road, London, SW6

by Jane Napper Tankerton Bay WI

How the WI changed my Life (again)

I use audio books to combat loneliness, living with a profoundly deaf husband it can be a long day with little conversation. I pop in my earbuds and travel to murders, love stories and historical sagas. However, with only one book a month included in my audio book membership it was becoming very expensive particularly when I needed to move on to books two and three in a series so I was very pleased to see a post on Unofficial WI facebook (UWI) about LIBBY which is a library based free book scheme. Both [Borrow box](#), and [Libby](#) allow you to take out and return books, audio books and magazines on line from Kent Libraries. The Federation Chairman and Treasurer joined in the post and helped me to download the app. I returned to the local library after many years to get a new card and passcode and off I went into the Libby store of available books.

Now you may already know about this service but those of you who don't and could benefit from this please try it. Both these Apps can be downloaded to iPads, tablets and smart phones from Google Play and the Apple App Store for free.

Books are returned automatically at the end of the loan period so no fines are incurred. If you renew the book automatically opens where you left off.

We had a resolution about using your library some years ago so I can recommend this way of escaping into another world all be it till

The End

Sandy Brown

LIFESTYLE TEAM - PALS

LIFESTYLE TEAM

ARCHERY TASTER DAY

At The Archbishop's School, St Stephen's Hill,
Canterbury, CT2 7AP

Saturday 7th June 2025 13:30 – 15:30
£20

We have been very lucky to secure a group session just for WI members hosted by Canterbury Archers Club. In order that everyone has tuition this event is strictly limited to 24.

These sessions get booked up really early, so to ensure we have a fun afternoon together, the booking for this will close much earlier than usual.

Canterbury Archers club have full insurance however, everyone attending must adhere to these basic rules please

- Close fitting clothing needs to be worn, to prevent bowstring snagging
 - Long hair must be tied back
- All jewellery needs to be removed (including body-pins etc – if applicable)
 - No open toe footwear

CLOSING DATE IS 30TH MARCH 2025

Tickets available from Ticketsource or the EKFWI office

**For further information please contact
Federation office**

The Joan Boucher Cup for Writing



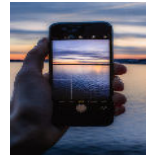
DEADLINE 3 JANUARY 2025

It's that time of year again, shorter days and longer evenings, more time indoors. So what can be better than to release your talents and write a short story? This year we are asking for not more than 600 words ending with "Why do I always do that?"

Write your own appropriate title and submit by 3rd January 2025 either by email giving your name, WI and contact details or in writing using the form provided (ask your WI secretary). Please write the number of words used at the end.



LIFESTYLE TEAM PHOTOGRAPHY COMPETITION



This is a free to enter competition, suitable for those who just point and click as well more advanced photographers!

We would love to see your photographs that capture the competition title of

WOMEN AND LEISURE

The top five will be on display at the EKFWI AGM at Kent College on 14th April. and the winner will feature in East Kent News

Please submit your photographs via email to assistant.secretary@eastkentfedwi.org.uk or in hard copy to the federation office by 27th February 2025

**For further information please contact
Federation office.**

Tip of the month

Have you had a good WI meeting which had little or no cost. This is your opportunity to share with others.

Here's one to start:

Hythe Bay WI enjoyed an evening when Christina shared her hobby of machine embroidery. She brought her large embroidery machine along to demonstrate how it takes her designs and transforms them into items she gives to friends and family as gifts.

From our Climate Ambassador

Over the past month I have attended a couple of really inspiring local events.

The Mayor of Hythe organised a sustainable fashion show. All the models were wearing outfits they had purchased second hand either from local charity shops or online from eBay or Vinted. They each carried a placard with an important message about the harm that fast fashion is doing to the environment and what we can do to help prevent that. The message that really resonated with me was to shop in your own wardrobe. It's really easy to forget the clothes that you already own and digging them out again can be almost like having something new.

This article is a good reminder of the harms from fast fashion [Fast Fashion and Its Environmental Impact in 2024 | Earth.Org](#)

I also attended the Sustainable Futures Forum which is supported by my local district council. This is an event designed to encourage local sustainable businesses and organisations to network with each other. It was really encouraging to discover how much good work is going on in Folkestone. Why not have a look at your local council's website to see what is being done to encourage sustainability in your area?

As I am still the only Climate Ambassador in East Kent I occasionally meet up with the East Sussex Climate Ambassadors. This time they were talking about some Scrap Shops that operate in their area. I am not aware of any operating in East Kent so I would love to hear from any of you who have any ideas about how we might organise some way of us sharing the scraps that we all end up with from our various craft projects.

Lesley Whybrow [07920 769397](tel:07920769397) lesley.Whybrow@yahoo.com

PUBLIC AFFAIRS TEAM

Recycling , caring for our environment.

With limited resources on the planet recycling is more important than ever. Whilst we all know what to put in our recycling bins (and if we don't we can ask the recycling person from our local Council to come to WI) what to do with other items isn't always so easy.

There are many objects that can't go in our bins. Here's just a small selection to inspire you. If you want to recycle something there are also Freestuff groups on FB which are easy to use.

Bras : www.againstbreastcancer.org.uk
IT : www.recycleit.co.uk
Ink cartridges: www.recycle4charity.co.uk
Bikes : www.thebikeproject.co.uk

There are many more, if you know of any please let us know

Superdrug send all their blister packs to Terracycle. TerraCycle's mission is to eliminate the idea of waste. They guarantee to recycle all the accepted waste they receive. The company takes hard to recycle items including waxed bread wrappers , dental items, lavazza coffee pods and much more.

They work alongside the industries that produce the items in the first place hence the collections at pharmacies. Recycling bins can be bought by businesses or individuals, they can be found locally. In Faversham there is a dental bin in the Council office and a blister pack at Lady Dane vets (Faversham and Whitstable practice). Why not make some enquiries to see where your local collection boxes are?

POT LUCK QUIZ

At the recent Top Team Quiz each WI team was asked to submit a question for this quiz, as you will see they are extremely varied and challenging!! Good Luck!

Answers on page 9.

No	Question	Submitted by
1	What are the most southerly, northerly, easterly and westerly states of the USA?	Chartham WI
2	In the very first FA cup final one team had two captains – why?	Orlestone WI
3	Which country has the highest life expectancy?	Becket WI
4	Which Prime Minister of Japan (1964-1972) is the only Japanese winner of the Nobel Peace Prize?	Graveney & District WI
5	Who is the patron Saint of brewers?	Faversham Gunpowder WI
6	What was the last letter of the alphabet to be added?	Willesborough WI
7	How many bones in a giraffe's neck?	SWAN WI
8	What is the term for the husk that surrounds the coffee fruit?	Milstead with Frinsted WI
9	How many brains does any octopus have?	Boughton with Eastwell WI
10	Who is the only female musical artist to have had a No 1 single in everyone of the last 5 decades?	Herne WI
11	What is a fuggle?	Smeeth WI
12	What is the name of the alien plant in Little Shop of Horrors?	St Margaret's at Cliffe WI
13	What is the acronym CAPTCHA mean? (This is when you are asked to tick how many bikes or cars etc you see in a grid photograph)	Upchurch WI
14	What is Mr Motivator's real name?	Whitfield Evening WI
15	Leonard Bernstein conducted a historic performance on 25/12/89 to celebrate what?	Wingham WI

News from around the Federation

You can't beat a good fish and chip supper and **GARLINGE WI** did just that at their last meeting of 2024. With President Sue bombarding us with a musical quiz and charades, and plenty of bawdy behaviour, it was a really good evening. However, the highlight has to be the three Christmas hampers in our charity raffle, the proceeds of which went to local charity Community Kindness Thanet, whose annual mission is to provide gifts to hundreds of vulnerable children and adults in Thanet who might otherwise miss out on the joys of Christmas time.

Upchurch WI celebrated Christmas with a party in the Village Hall. All members contributed food to make a delicious buffet spread and mulled wine and drinks were on offer.

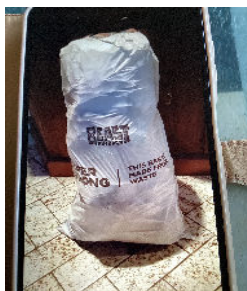
We were entertained by member's husband John Hall who sang to us while we ate our meal and then things got more lively when we joined in later including a riotous version of The Twelve Days of Christmas.

We rounded off by a little dancing round our miniature trees. We had a Christmas theme raffle and the night was made more special by a presentation to Brenda Kemsley for being a member for over 50 years.



President Helen Eldridge presented member Brenda Kemsley with a certificate and flowers to mark Brenda being a member of Upchurch WI for over 50 years.

Having read the Resolution list, I just thought you might like to see that **Rodmersham Green WI** are doing their bit for recycling medication packaging. Every month members bring empty packets of medication and one of our members delivers to Superdrug in Sittingbourne. This huge bag is several months of donations. Marie Curie benefits from this.



After **Birchington -on-Sea (Morning) WI's** December monthly meeting with Carol singing, a festive quiz & dingbats our members made their way in their sparkly finery to The Smugglers Restaurant where they enjoyed a delicious Christmas meal.



Sixteen members of **Rodmersham Green WI** went for a Christmas do, on the 27th November at the Mercure Hotel. Thirty five members enjoyed a lovely Christmas Lunch at our local "the Fruiterers", on 5th December and on Monday 9th December, we hosted a carol service in Rodmersham Church, to which we invited other local WI's. About 60 people attended for a nice service given by Pat Tatchell with organist Ann Newman.

Afterwards we warmed up with a cup of tea and mince pie. Collection raised £133 half will go to the church, the rest of the money to the local food bank, that we support every month.



At the Mercury Hotel

Carol Partridge made a welcome return trip to **Graveney and District WI** teaching us about the delights of corn dolly making.

We made three items during the course of the morning workshop with Carol giving members some interesting facts about the history of corn dolly making around the world.



Members with Carol seated

ANSWERS to POT LUCK QUIZ			
1	S: Florida, N: Alaska, E: Alaska, W: Alaska	9	9
2	Because Wanderers played Royal Artillery and two of the soldiers were captains!	10	Kylie Minogue
3	Hong Kong	11	Kentish Hop
4	Eisaku Sato (won Nobel Peace Prize in 1974 with Sean McBride)	12	Audrey II
5	St Thomas-a- Beckett	13	Completely Automated Public Turing test to tell Computers and Humans Apart
6	J	14	Derrick Errol Evans
7	8	15	Fall of the Berlin Wall
8	Cascara		

Members of Deal & Sandwich Craft & Home Economics Guild met to make Christmas wreaths. They shared greenery and ribbon and created an array of colourful wreaths for door or table decoration. They also shared mince pies and sausage rolls as this was the last meeting before Christmas. Any WI member will be welcome to Guild meetings held at 2pm in Sandwich Guildhall. The next meeting will be on Monday 20th January for a “taste & compare” afternoon. For more information please contact the federation office who will pass on your message to the guild.



The Winners of December 2024 200+ Club draw

1st	No. 80	Margaret Addington	£17
2nd	No. 91	Joy Taylor	£10.20
3rd	No. 82	Margaret Smith	£6.80

NEWS FROM OUR GUILDS

ENVIRONMENT & NATURAL HISTORY GROUP

We are planning our Programme for 2025, and already have visits arranged to Hothfield Heathlands, the reopening Maison Dieu and Roman Painted House in Dover as well as the Franciscan Gardens in Canterbury - all with knowledgeable guides.

However, suggestions are still welcomed. The Programme will be available at the end of February. For any details, please contact the federation office who will forward your message to Janet Adamson, Hon Secretary.

DATES FOR CRAFT & HOME ECONOMICS GUILD IN DOVER MEETINGS & SPEAKERS FOR 2025

MEETINGS ARE EVERY 4TH WEDNESDAY IN THE MONTH AT 2PM.

2025

January 22	No Speaker At This Meeting, As Its Our Social & Bring & Buy
February 26	Alison Shopland Old Fashioned Cooking. (A Member Of Whitfield Evening)
March 26	Julie Goodburn Talking About Stroke Awareness (A Member Of Whitstable)
April 23	Dee Wickham Making Twiddle Blankets
May 28	More Craft Demonstrations (By Various Members)
June 25	Frances Smith Her Trip To Japan
July 23	Christine Duchemin Picking Up Were She Left Off
August 27	Our Summer Tea. No Speaker.
September 24	Daniel Welsh From Dover District Coucil Talking About Our Waste & Recycling
October 22	Martin Newcombe Talking On Local Ghosts & Folklore.
November 26	Annual Meeting. Plus Our Birthday. So No Speaker.
December	T.B.A.

Any Suggestions For Speakers Are Welcome

GUILD & GROUP MEETINGS

SHEPPEY CRAFT & HOME ECONOMICS GUILD Meet at 2.00 pm on the fourth Thursday of the month at The Bethel Church Hall, Chapel Street, Minster on Sea, Sheerness ME12 3QF. Contact the federation office who will forward your message to the guild's Secretary, if you want further details.

LACEMAKERS GUILD – We are a small group of enthusiastic lace makers, who meet monthly, at the Bean Bliss Cafe, 9 Tyler Hill Rd, CT2 9HP
We would love for some new members to join us. We are happy to help beginners and we have various pillows, bobbins, books and threads to get you on your lacemaking way. Our meeting is on the third Tuesday from 10 am to 1 pm.

NEEDLECRAFT GUILD - The Needlecraft Guild is a very friendly creative group, who all enjoy trying their hand at traditional, experimental and new techniques of Needlecraft. We try a new project each month. Whatever level of ability, a warm welcome and help is given to new members. We meet on the fourth Wednesday of the month at 10.30am till 2.30pm at Chartham Hatch Village Hall, Bigbury Road, Chartham Hatch, Canterbury CT4 7NH. For further details contact the federation office who will forward your message.

SPINNERS – The Spinners Guild meet in Chartham Village Hall, Station Road, Chartham, Kent CT4 7JA on the first Monday of every month, unless it is a Bank Holiday, in which case the meeting takes place on the second Monday. The meetings start at 10.30am and end at 2.30pm. It's a friendly & lively group and, in addition to spinning, they have workshops on knitting, felting, weaving, button making - pretty much anything woolly! New members are always welcome and are put under the wing of experienced spinners to learn about the craft.

DEAL & SANDWICH GUILD

Deal and Sandwich Guild meet on the third Monday at the Guildhall,, 2 - 4pm.

WHITSTABLE CRAFT & HOME ECONOMICS GUILD - Meet at St John the Baptist Church Centre, 11 St John's Road, Swalecliffe, Whitstable, Kent CT5 2QU on the 3rd Tuesday of every month. The meeting starts at 2.15pm. No meeting in August.

The East Kent News editorial team welcome articles from WIs which focus on special events or may be of particular interest to other members . Please limit the number of words to a maximum of **150** and just one or two individual photographs. Please send as a word document not PDF. Copy should arrive by email one week before the end of the month.